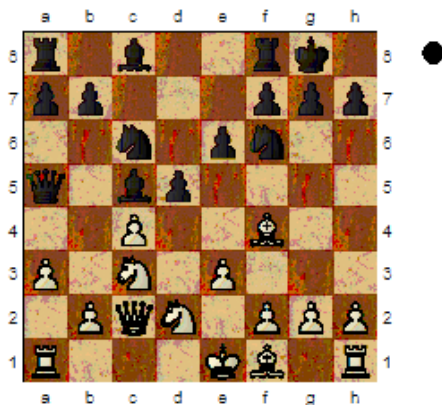


□ Carlsen,Magnus **D37**
 2835
 ■ Caruana,Fabiano **2832**

World Chess Championship 2018 (7)

1.d4 Sf6 2.Sf3 d5 3.c4 e6 4.Sc3
Le7 5.Lf4 0-0 6.e3 c5 7.dxc5 Lxc5
8.Dc2 Sc6 9.a3 Da5 10.Sd2 5

[10.0-0-0 Le7 11.Kb1 a8 12.g4
 dxc4 13.Lxc4 b5 14.g5 bxc4
 15.gxf6 Lxf6 16.Se4 Le7 17.Thg1
 Td8 18.Txd8+ Sxd8 19.Dxc4
 ½-½ (27) Karjakin,S (2773)-
 Nakamura,H (2777) Saint Louis
 2018]



Strongly threatening cxd. D37:
 Queen's Gambit Declined: 5 Bf4
10...Dd8 11.Sb3 Threatens to win with
 cxd5. **Lb6N**

[Predecessor: 11...Le7 12.Td1 a5
 13.cxd5 exd5 14.Le2 a4 15.Sd4
 Da5 16.0-0 Ld7 17.Sdb5 Tfc8
 1-0 (36) Golod,V (2584)-
 Gershkovich,D (2341) Haifa 2008]

12.Le2 White is slightly better. **De7**
13.Lg5 dxc4 The position is equal.
14.Sd2 Se5 15.0-0 Ld7 16.Lf4 Sg6
17.Lg3 Lc6 18.Sxc4 Black must now
 prevent Bd6. **Lc7 19.Tfd1 Tfd8**

20.Txd8+ Txd8 21.Td1 Txd1+
22.Dxd1 Sd5 23.Dd4 Sxc3 24.Dxc3
Lxg3 25.hxg3 Dd7 26.Ld3 b6 27.f3
Lb7 28.Lxg6 hxg6 29.e4 Dc7 30.e5
Dc5+ 31.Kh2 La6 32.Sd6 Dxc3
33.bxc3= Endgame KB-KN **f6 34.f4**
Kf8 35.Kg1 Ke7 36.Kf2 Kd7 37.Ke3
Lf1 38.Kf2 La6 39.Ke3 Lf1 40.Kf2
 Accuracy: White = 73%, Black = 77%.
 ½-½